



Madison, Wisconsin

# CITY OF MADISON

## CITY ENGINEERING DIVISION

## DEPARTMENT OF PUBLIC WORKS

# PLAN OF PROPOSED IMPROVEMENT

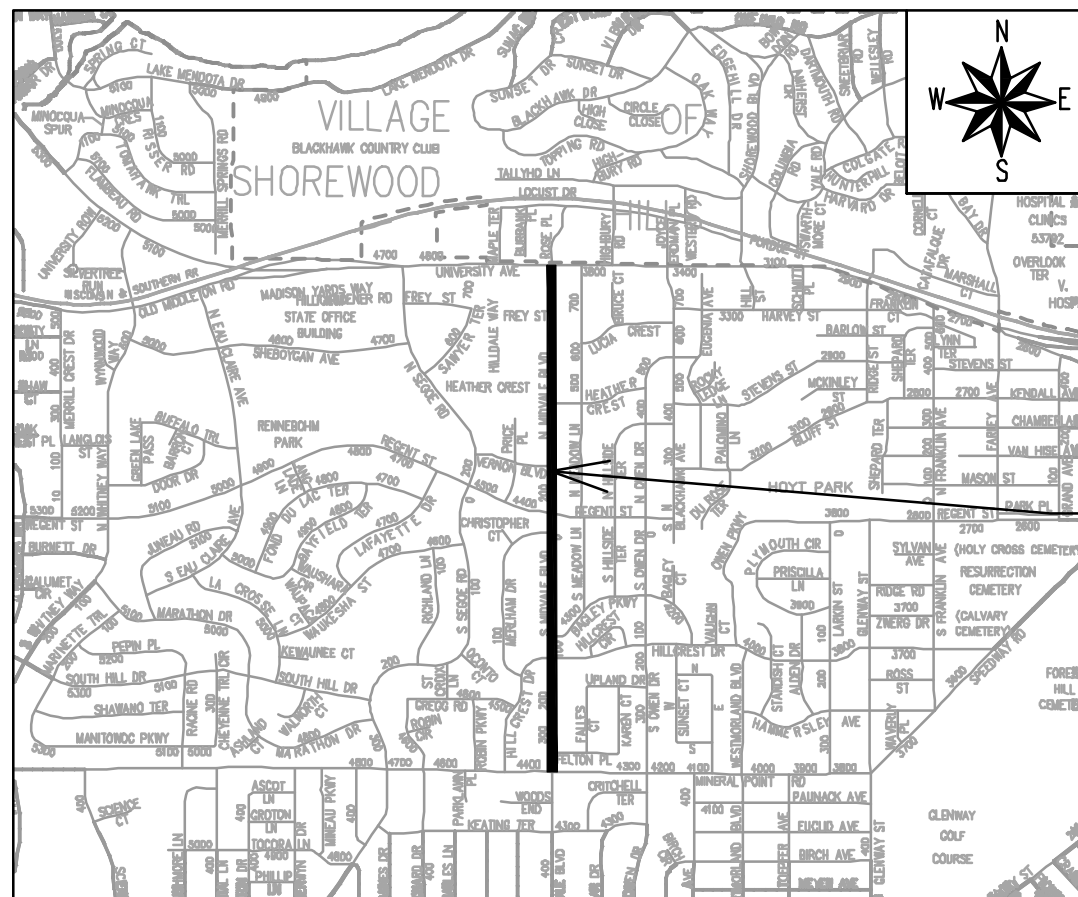
### INDEX OF SHEETS

SHEET NO. PD1-PD9	STREET PLAN DETAILS
SHEET NO. E1-E3	ELECTRICAL PLANS
SHEET NO. PM1-PM12	PAVEMENT MARKING PLANS

## MIDVALE BOULEVARD PAVEMENT PATCHING

CITY PROJECT NO. 15516

CONTRACT NO. 8810



PROJECT LOCATION

CONVENTIONAL SIGNS	
FIELD VERIFY ALL UTILITY LOCATIONS	
GAS	— G —
STORM SEWER	— ST —
SANITARY SEWER	— SN —
WATER	— W —
BURIED ELECTRIC	— E —
OVERHEAD ELECTRIC	— OH —
POWER POLE	
ADA COMPLIANT RAMP W/ DETECTABLE WARNING FIELD	
COMBUSTIBLE FLUIDS	

PUBLIC IMPROVEMENT PROJECT APPROVED

FEBRUARY 10, 2026

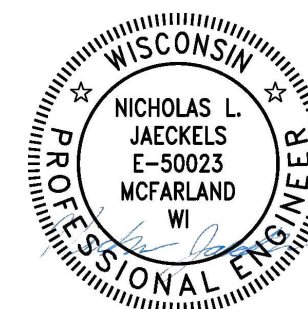
BY THE COMMON COUNCIL OF MADISON, WISCONSIN

PUBLIC IMPROVEMENT DESIGN APPROVED BY:

Chris Petykowski 03/02/2026

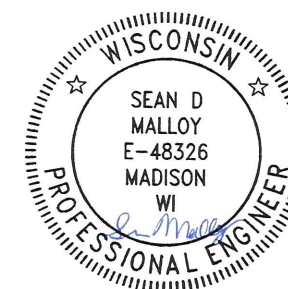
City Engineer Date

STREET DESIGNED BY:



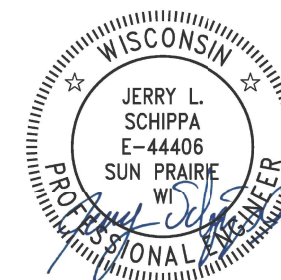
02/27/2026

PAVEMENT MARKING DESIGNED BY:



02/27/2026

ELECTRICAL DESIGNED BY:



02/27/2026

-CITY MAINTENANCE PLAN NOT REQUIRED

PLOT SCALE: 1 IN = 1 FT XREF


PLOT NAME: ---

REV. DATE: 2/26/2026 9:42 AM

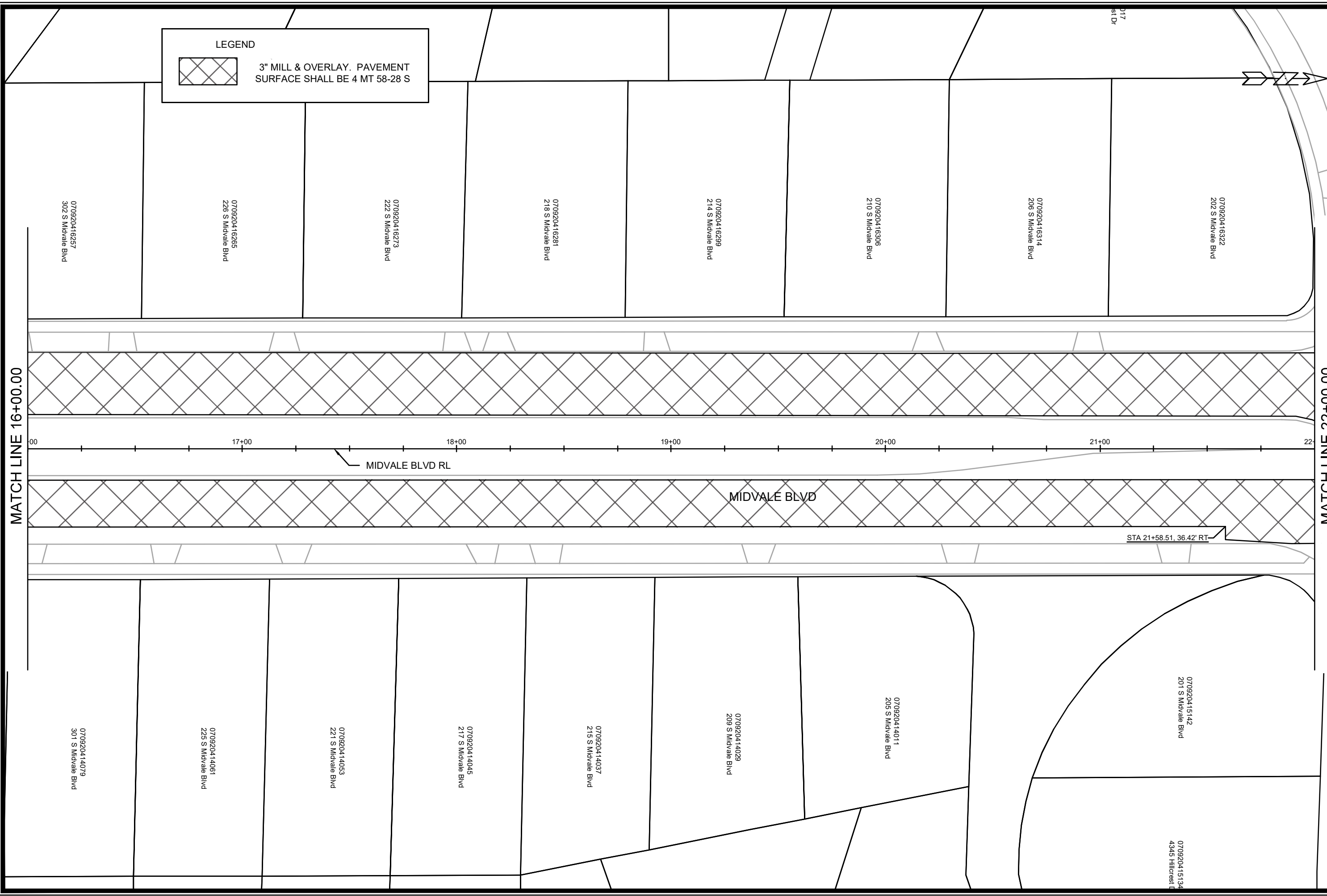
ORIGINATOR: CITY\_OF\_MADISON



**LEGEND**



3" MILL & OVERLAY. PAVEMENT SURFACE SHALL BE 4 MT 58-28 S




MARK	REVISION	DATE	BY

15516  
15516  
15516  
15516  
15516

15516  
MADISON, WI  
CONTRACT NO: 8810


PLAN DETAIL - MIDVALE BOULEVARD  
MIDVALE BOULEVARD PAVEMENT PATCHING

M:\DESIGN\Projects\15516\CAD\Streets\15516EN-PlanDetails.dwg

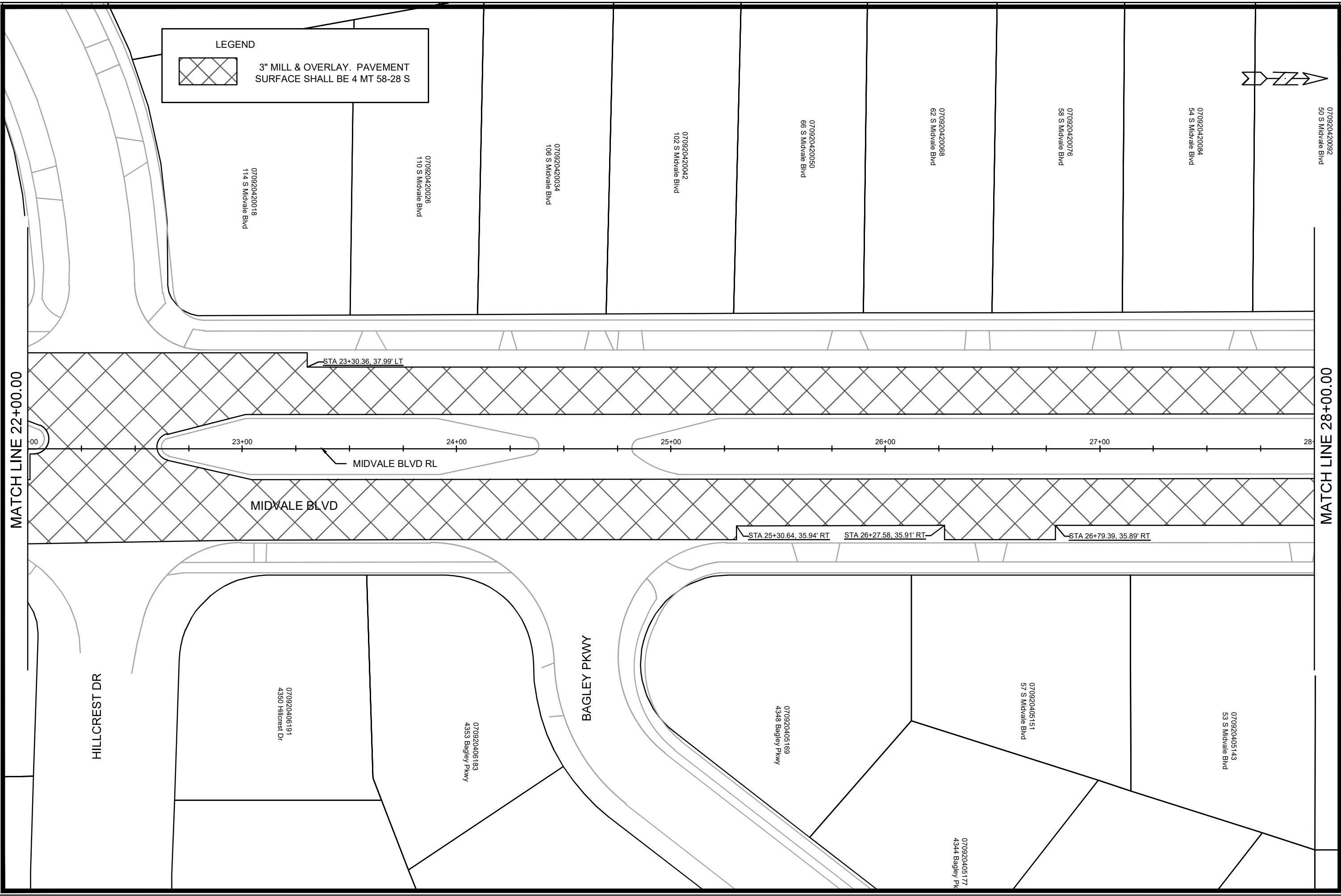


15516  
PD-2

**LEGEND**



3" MILL & OVERLAY. PAVEMENT SURFACE SHALL BE 4 MT 58-28 S



MARK	REVISION	DATE	BY

Designated By: N.J. Date: 2/25/2026 8:08 AM Scale: 1" = 40'

15516

15516

MADISON, WI


8810

CONTRACT NO:

PLAN DETAIL - MIDVALE BOULEVARD

MIDVALE BOULEVARD PAVEMENT PATCHING

M:\DESIGN\Projects\15516\CAD\Streets\15516EN-PlanDetails.dwg




15516

PD-3

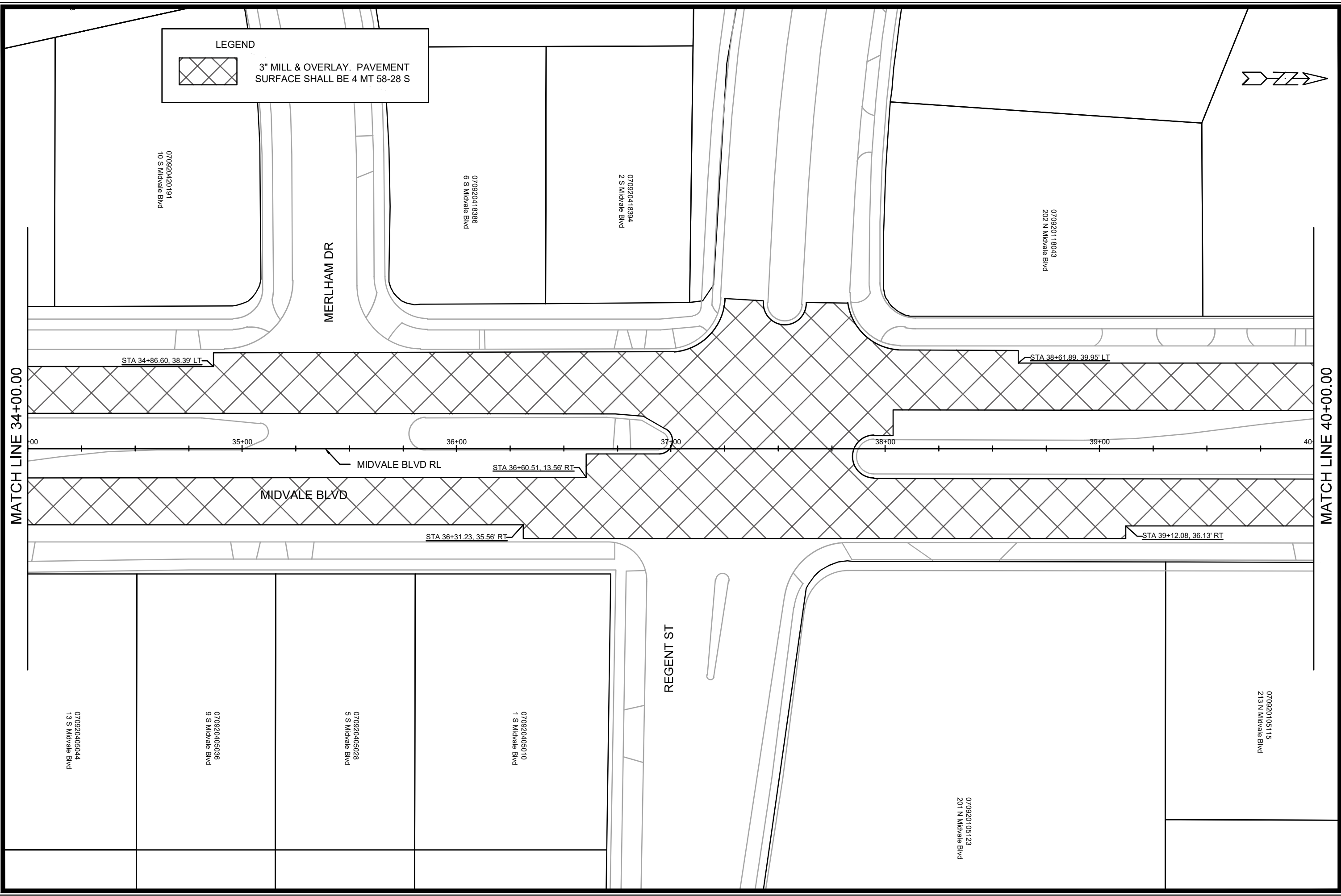
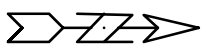
PD-3



**LEGEND**



3" MILL & OVERLAY. PAVEMENT  
SURFACE SHALL BE 4 MT 58-28 S



MARK	REVISION	DATE	BY

Designated By: N.L.J. Date: 2/25/2026 8:13 AM Scale: 1" = 40'

15516

15516

MADISON, WI


8810

CONTRACT NO:

PLAN DETAIL - MIDVALE BOULEVARD

MIDVALE BOULEVARD PAVEMENT PATCHING

M:\DESIGN\Projects\15516\CAD\Streets\15516EN-PlanDetails.dwg




15516

PD-5

PD-5

**LEGEND**



3" MILL & OVERLAY. PAVEMENT SURFACE SHALL BE 4 MT 58-28 S

070920118077  
226 N Midvale Blvd

070920105107  
219 N Midvale Blvd

070920105090  
225 N Midvale Blvd

070920105082  
229 N Midvale Blvd

070920105074  
301 N Midvale Blvd

070920105066  
305 N Midvale Blvd

070920105058  
313 N Midvale Blvd

070920105040  
321 N Midvale Blvd

VERNON BLVD

070920122044  
302 N Midvale Blvd

070920122052  
310 N Midvale Blvd

MATCH LINE 40+00.00

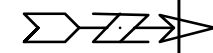
MATCH LINE 46+00.00

STA 41+53.93, 39.63' LT

STA 44+17.29, 39.34' LT

MIDVALE BLVD RL

MIDVALE BLVD



MARK	REVISION	DATE	BY

Designated By: N.L.J. Date: 2/25/2026 8:16 AM Scale: 1" = 40'

15516


15516  
MADISON, WI  
MIDVALE BOULEVARD PAVEMENT PATCHING  
CONTRACT NO: 8810

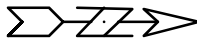


15516  
PD-6

M:\DESIGN\Projects\15516\CAD\Streets\15516EN-PlanDetails.dwg

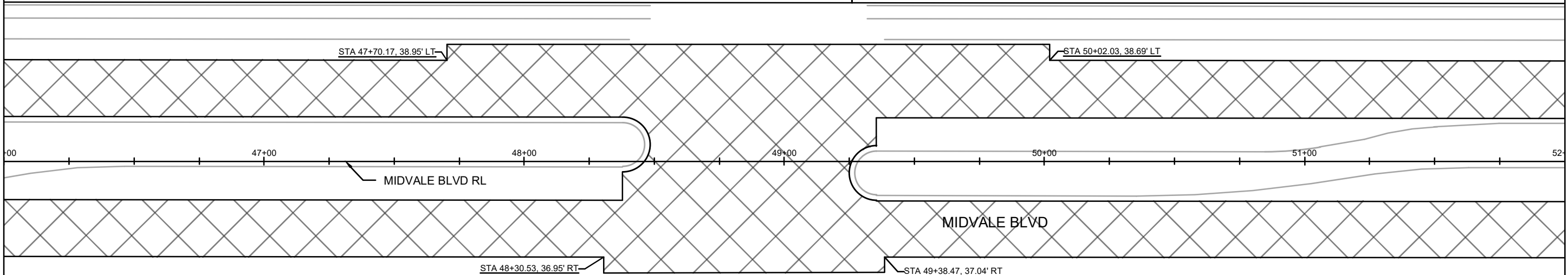
**LEGEND**

 3" MILL & OVERLAY. PAVEMENT SURFACE SHALL BE 4 MT 58-28 S



MATCH LINE 46+00.00

MATCH LINE 52+00.00



070920105032  
401 N Midvale Blvd

070920105024  
409 N Midvale Blvd

070920105016  
413 N Midvale Blvd

HEATHER CREST

070920104331  
501 N Midvale Blvd

070920104323  
505 N Midvale Blvd

070920104315  
509 N Midvale Blvd

070920104307  
513 N Midvale Blvd

070920121046  
502 N Midvale Blvd

MARK	REVISION	DATE	BY
15516			

Designated By: NLI Date: 2/25/2026 8:19 AM Scale: 1" = 40'


15516  
MADISON, WI  
MIDVALE BOULEVARD PAVEMENT PATCHING  
CONTRACT NO: 8810



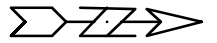
15516  
PD-7

M:\DESIGN\Projects\15516\CAD\Streets\15516EN-PlanDetails.dwg

LEGEND



3" MILL & OVERLAY. PAVEMENT SURFACE SHALL BE 4 MT 58-28 S



ENTRANCE TO HILLDALE MALL

070920121054  
602 N Midvale Blvd

STA 52+53.09, 38.42' LT

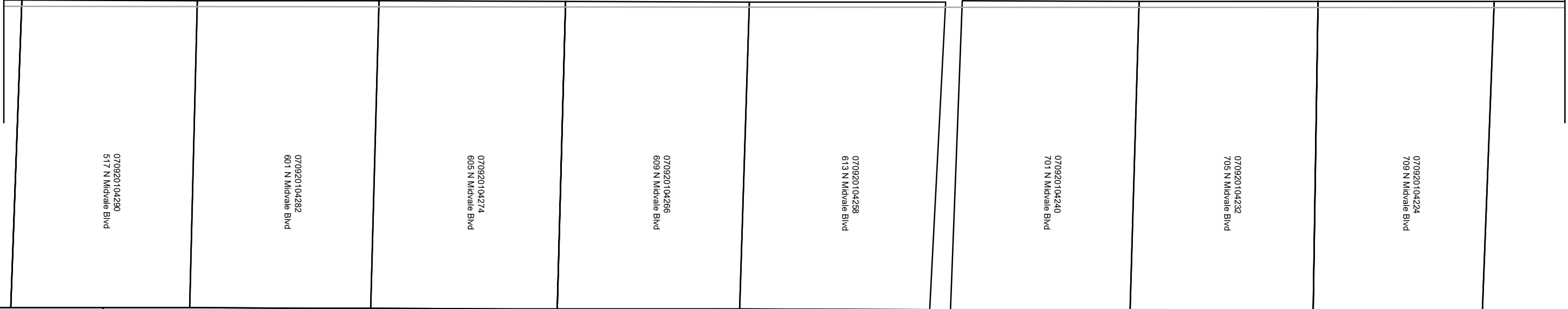
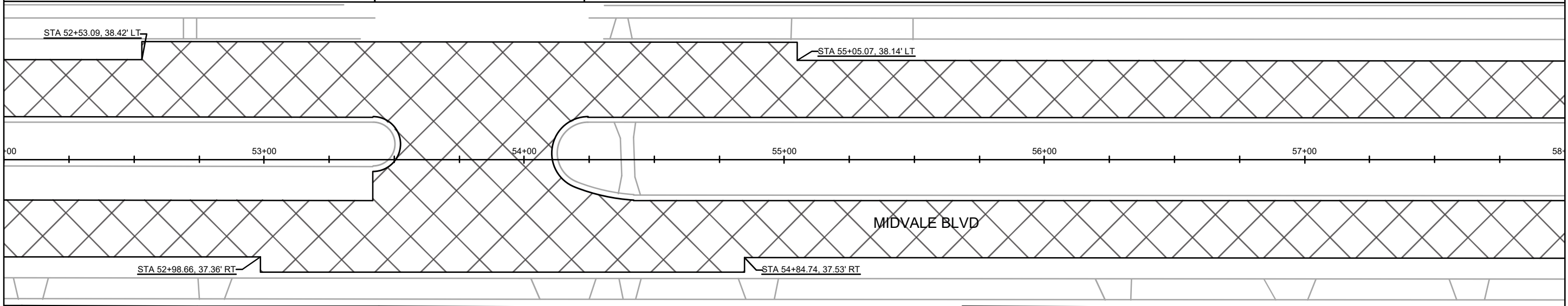
STA 55+05.07, 38.14' LT

STA 52+98.66, 37.36' RT

STA 54+84.74, 37.53' RT

MATCH LINE 52+00.00

MATCH LINE 58+00.00



MARK	REVISION	DATE	BY

15516  
MADISON, WI  
8810  
CONTRACT NO:




15516  
PD-8

PLAN DETAIL - MIDVALE BOULEVARD  
MIDVALE BOULEVARD PAVEMENT PATCHING  
M:\DESIGN\Projects\15516\CAD\Streets\15516EN-PlanDetails.dwg

PD-8

**LEGEND**



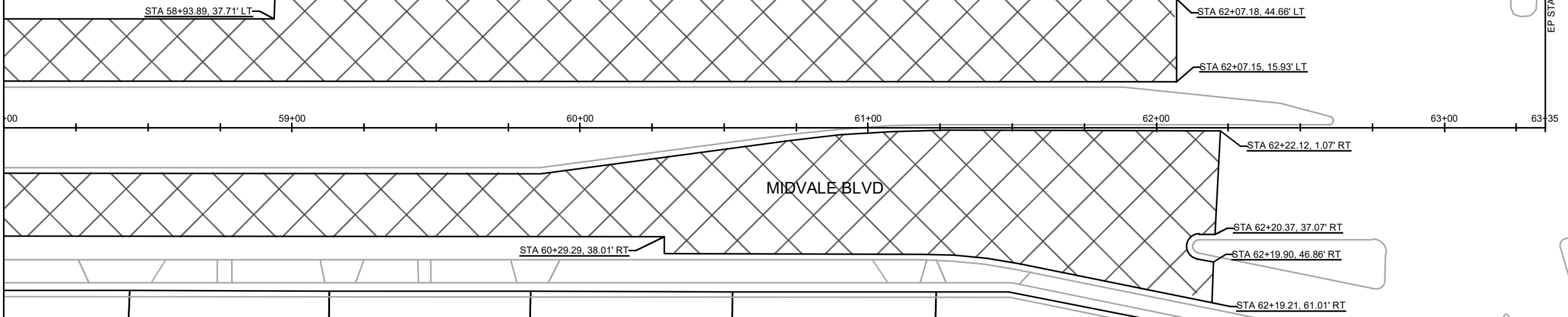
3" MILL & OVERLAY. PAVEMENT  
SURFACE SHALL BE 4 MT 58-28 S

MATCH LINE 58+00.00

FREY ST

MIDVALE BLVD

UNIVERSITY AVE



070920104216  
713 N Midvale Blvd

070920104208  
717 N Midvale Blvd

070920104191  
721 N Midvale Blvd


070920104183  
725 N Midvale Blvd

070920104175  
729 N Midvale Blvd

070920104167  
3609 University Ave

MARK	REVISION	DATE	BY

15516  
MADISON, WI  
CONTRACT NO: 8810



15516  
PD-9

RECTANGULAR RAPID FLASHING BEACON INSTALLATION NOTES:

MIDVALE BLVD & HILLCREST DR

- 1. TS#1  
 INSTALL TYPE GR BASE WITH PEDESTAL BASE, 15-FT STANDARD SIGNAL POLE  
 INSTALL RRFB SIGN, CONTROLLER, AND SOLAR PANEL ON POLE AS SHOWN ON PLANS  
 INSTALL PEDESTAL BASE  
 INSTALL 2" PVC CONDUIT TO PB#1  
 INSTALL APS PED BUTTON ON DIRECT BURY 3.5-FT POLE (PB#1)

- 2. TS#2  
 INSTALL LB-8R BASE, 20-FT 7 GA POLE  
 INSTALL 18-FT TROMBONE ARM  
 INSTALL RRFB SIGNS, CONTROLLER, AND SOLAR PANEL ON POLE AS SHOWN ON PLANS  
 INSTALL APS PED BUTTON

- 3. TS#3  
 INSTALL LB-8R BASE, 20-FT 7 GA POLE  
 INSTALL 18-FT TROMBONE ARM  
 INSTALL RRFB SIGNS, CONTROLLER, AND SOLAR PANEL ON POLE AS SHOWN ON PLANS  
 INSTALL PEDESTAL BASE  
 INSTALL 2" PVC CONDUIT TO PB#2  
 INSTALL APS PED BUTTON ON DIRECT BURY 3.5-FT POLE (PB#2)


MIDVALE BLVD & HILLDALE MALL DRIVEWAY

- 1. TS#1  
 INSTALL LB-8R BASE, 20-FT 7 GA POLE  
 INSTALL 22-FT TROMBONE ARM  
 INSTALL RRFB SIGNS, CONTROLLER, AND SOLAR PANEL ON POLE AS SHOWN ON PLANS  
 INSTALL PEDESTAL BASE  
 INSTALL 2" PVC CONDUIT TO PB#1  
 INSTALL APS PED BUTTON ON DIRECT BURY 3.5-FT POLE (PB#1)

- 2. TS#2  
 INSTALL RRFB SIGN, CONTROLLER, AND SOLAR PANEL ON EXISTING POLE AS SHOWN ON PLANS  
 INSTALL APS PED BUTTON

- 3. TS#3  
 INSTALL LB-8R BASE, 20-FT 7 GA POLE  
 INSTALL 22-FT TROMBONE ARM  
 INSTALL RRFB SIGNS, CONTROLLER, AND SOLAR PANEL ON POLE AS SHOWN ON PLANS  
 INSTALL APS PED BUTTON

- 4. TS#4  
 INSTALL TYPE GR BASE WITH PEDESTAL BASE, 15-FT STANDARD SIGNAL POLE  
 INSTALL RRFB SIGN, CONTROLLER, AND SOLAR PANEL ON POLE AS SHOWN ON PLANS  
 INSTALL PEDESTAL BASE  
 INSTALL 2" PVC CONDUIT TO PB#2  
 INSTALL APS PED BUTTON ON DIRECT BURY 3.5-FT POLE (PB#2)

15516	MADISON, WI	8810	E - 1
ELECTRICAL PLAN - MIDVALE BOULEVARD		CONTRACT NO:	
MIDVALE BOULEVARD PAVEMENT PATCHING		15516	
M:\DESIGN\Projects\15516\CAD\Traffic\15516TE-Electrical.dwg 			
E - 1		E - 1	

ENTRANCE TO  
HILLDALE MALL

REMOVE EXISTING  
POLE AND SIGN  
(BY CITY FORCES)

PB#1

TS#1

22-FT ARM

TS#2

TS#3

22-FT ARM

TS#4

PB#2

REMOVE EXISTING  
POLE AND SIGN  
(BY CITY FORCES)

MIDVALE BLVD

613 N Midvale Blvd

609 N Midvale Blvd

605 N Midvale Blvd

601 N Midvale Blvd

W16-7L  
W11-2

W11-2

W16-7R  
W11-2

W11-2  
W16-7R

W11-2

W11-2  
W16-7L



15516

E - 2

ELECTRICAL PLAN - MIDVALE BOULEVARD  
MIDVALE BOULEVARD PAVEMENT PATCHING

15516  
MADISON, WI

CONTRACT NO:  
8810

MARK	REVISION	DATE	BY
15516	Designated By: CJD	Date: 2/28/2025 9:16 AM	Scale: 1:25

M:\DESIGN\Projects\15516\CAD\Traffic\15516TE-Electrical.dwg

110 S Midvale Blvd

114 S Midvale Blvd

HILLCREST DR

S Midvale Blvd

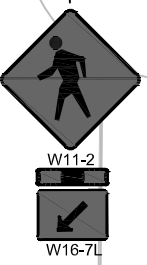
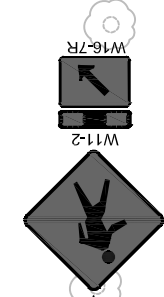
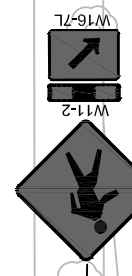
MIDVALE BLVD

S Midvale Blvd

4350 Hillcrest Dr

345 Hillcrest Dr

TS#1  
PB#1



18-FT ARM

TS#2

18-FT ARM

TS#3  
PB#2



ELECTRICAL PLAN - MIDVALE BOULEVARD  
MIDVALE BOULEVARD PAVEMENT PATCHING

15516  
MADISON, WI

MARK	REVISION	DATE	BY
15516	Designed By: CJD	Date: 2/28/2025 9:16 AM	Scale: 1:25

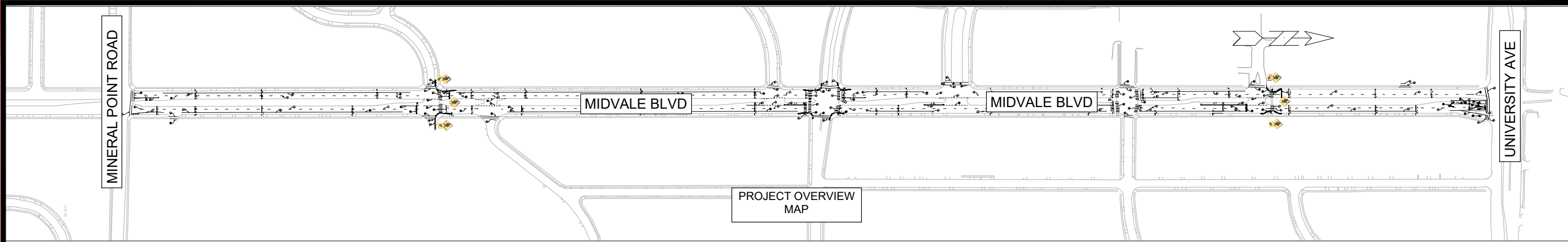
M:\DESIGN\Projects\15516\CAD\Traffic\15516TE-Electrical.dwg



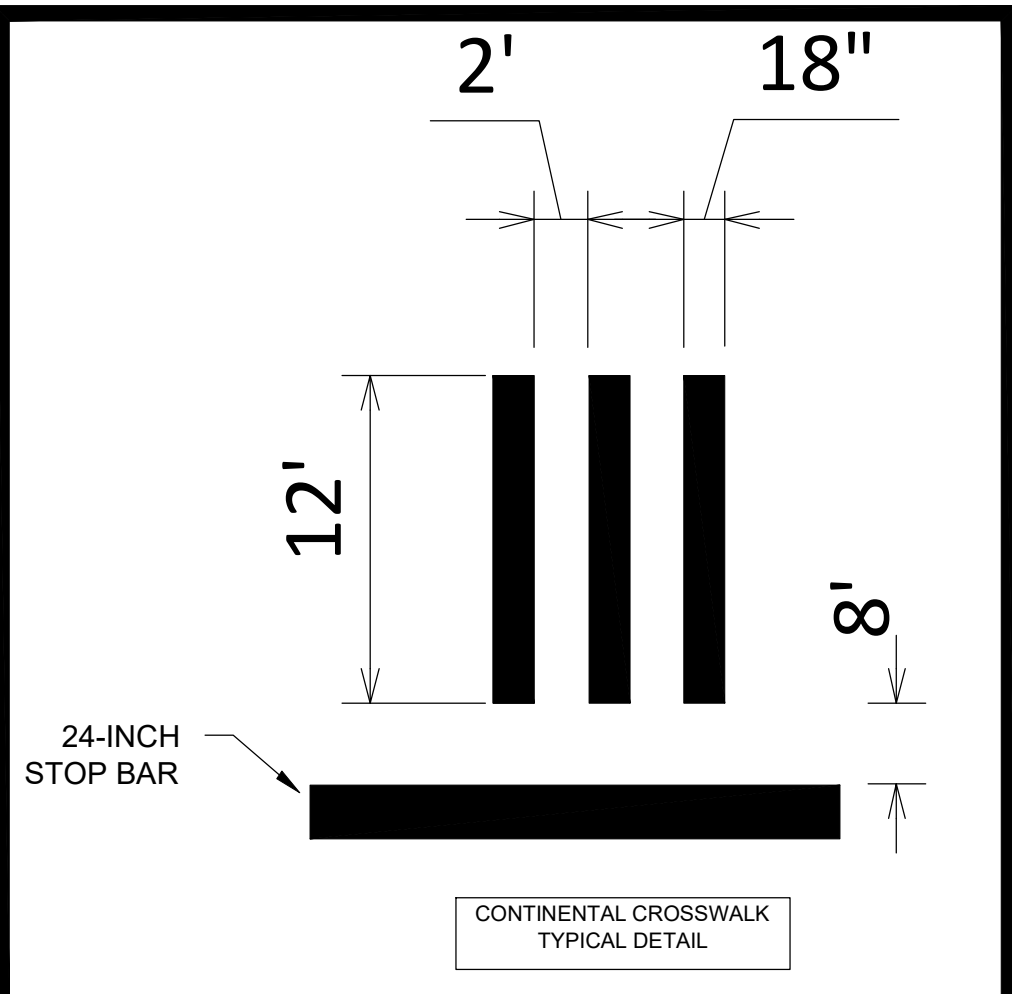
15516

E - 3

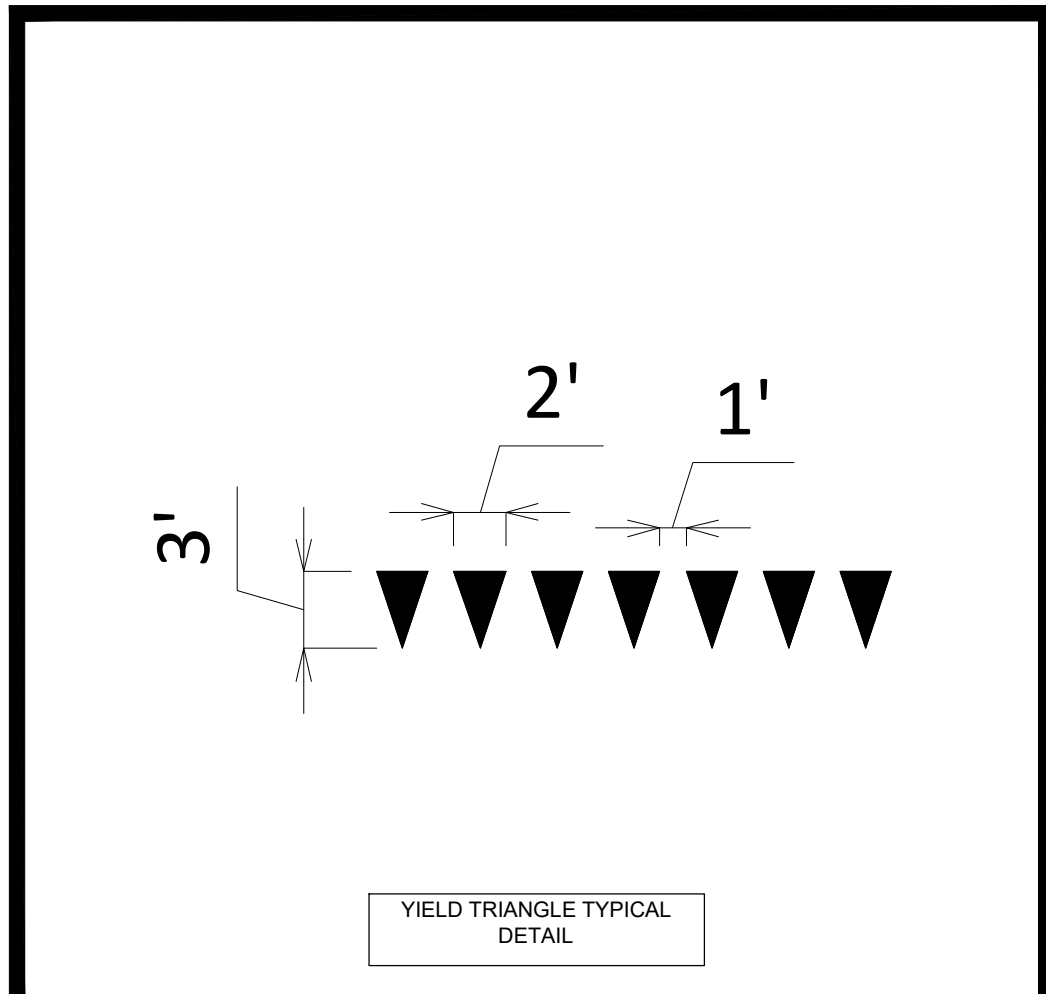
CONTRACT NO:  
8810



Callout	Description
1	PAVEMENT MARKING EPOXY, 6-INCH CROSSWALK
2	PAVEMENT MARKING EPOXY, 24-INCH STOP BAR
3	PAVEMENT MARKING EPOXY, 6-INCH LINE, WHITE
4	PAVEMENT MARKING EPOXY, 6-INCH LINE, 10' LINE X 30' GAP, WHITE
5	PAVEMENT MARKING EPOXY, YIELD TRIANGLES
6	PAVEMENT MARKING EPOXY, CONTINENTAL CROSSWALKS
7	PAVEMENT MARKING EPOXY, 6-INCH LINE, 5' LINE X 5' GAP, WHITE
8	PAVEMENT MARKING EPOXY, 6-INCH LINE, 2' LINE X 6' GAP, WHITE
9	PAVEMENT MARKING EPOXY, STRAIGHT ARROW
10	PAVEMENT MARKING EPOXY, RIGHT ARROW
11	PAVEMENT MARKING EPOXY, LEFT AND STRAIGHT ARROW
12	PAVEMENT MARKING EPOXY, LEFT ARROW
13	PAVEMENT MARKING EPOXY, WORD, ONLY



CONTINENTAL CROSSWALK  
TYPICAL DETAIL



YIELD TRIANGLE TYPICAL  
DETAIL

MARK	REVISION	DATE	BY

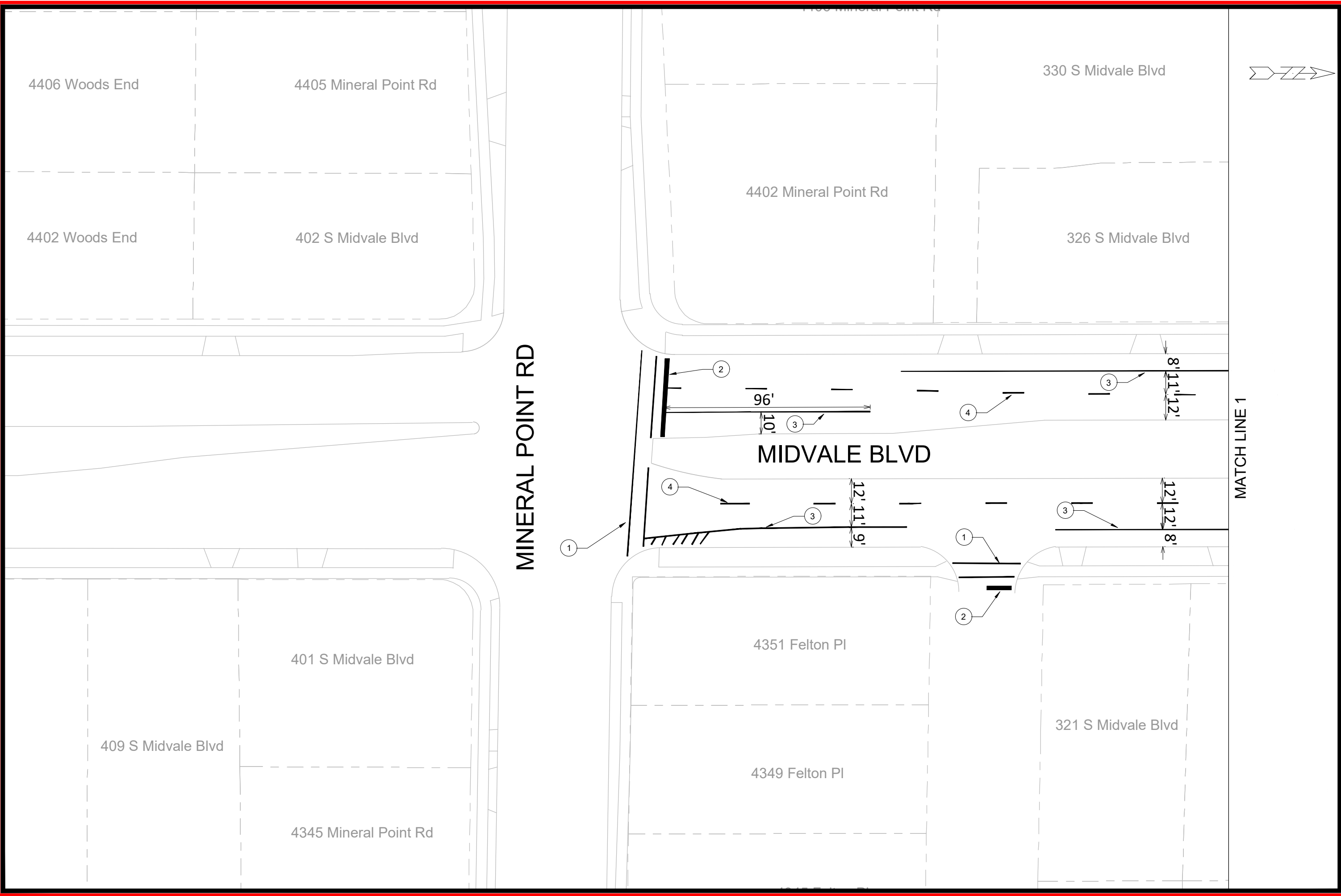
Designer: NLI  
 Date: 2/23/2028 9:58 AM  
 Scale: 1/32" = 1'-0"  
 15516  
 PM-1

15516  
 MADISON, WI  
 8810  
 CONTRACT NO:

PAVEMENT MARKING PLAN - MIDVALE BOULEVARD  
**MIDVALE BOULEVARD PAVEMENT PATCHING**  
 M:\DESIGN\Projects\15516\CAD\Traffic\15516TE-PavementMarking - Full Resurfacing.dwg



15516  
 PM-1



MARK	REVISION	DATE	BY

15516  
 MADISON, WI  
 8810  
 CONTRACT NO:

15516  
 MADISON, WI  
 8810  
 CONTRACT NO:

PAVEMENT MARKING PLAN - MIDVALE BOULEVARD  
**MIDVALE BOULEVARD PAVEMENT PATCHING**  
 M:\DESIGN\Projects\15516\CAD\Traffic\15516TE-PavementMarking - Full Resurfacing.dwg



15516  
 PM-2

15516  
 PM-2

MATCH LINE 1

MATCH LINE 2

318 S Midvale Blvd

314 S Midvale Blvd

306 S Midvale Blvd

302 S Midvale Blvd

226 S Midvale Blvd

222 S Midvale Blvd

218 S Midvale Blvd

317 S Midvale Blvd

313 S Midvale Blvd

309 S Midvale Blvd

305 S Midvale Blvd

301 S Midvale Blvd

225 S Midvale Blvd

221 S Midvale Blvd

217 S Midvale Blvd

215 S Midvale Blvd

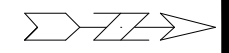
# MIDVALE BLVD

8' 12" 11"

12' 12" 8"

3

4



MARK	REVISION	DATE	BY

PAVEMENT MARKING PLAN - MIDVALE BOULEVARD  
**MIDVALE BOULEVARD PAVEMENT PATCHING**  
 M:\DESIGN\Projects\15516\CAD\Traffic\15516TE-PavementMarking - Full Resurfacing.dwg

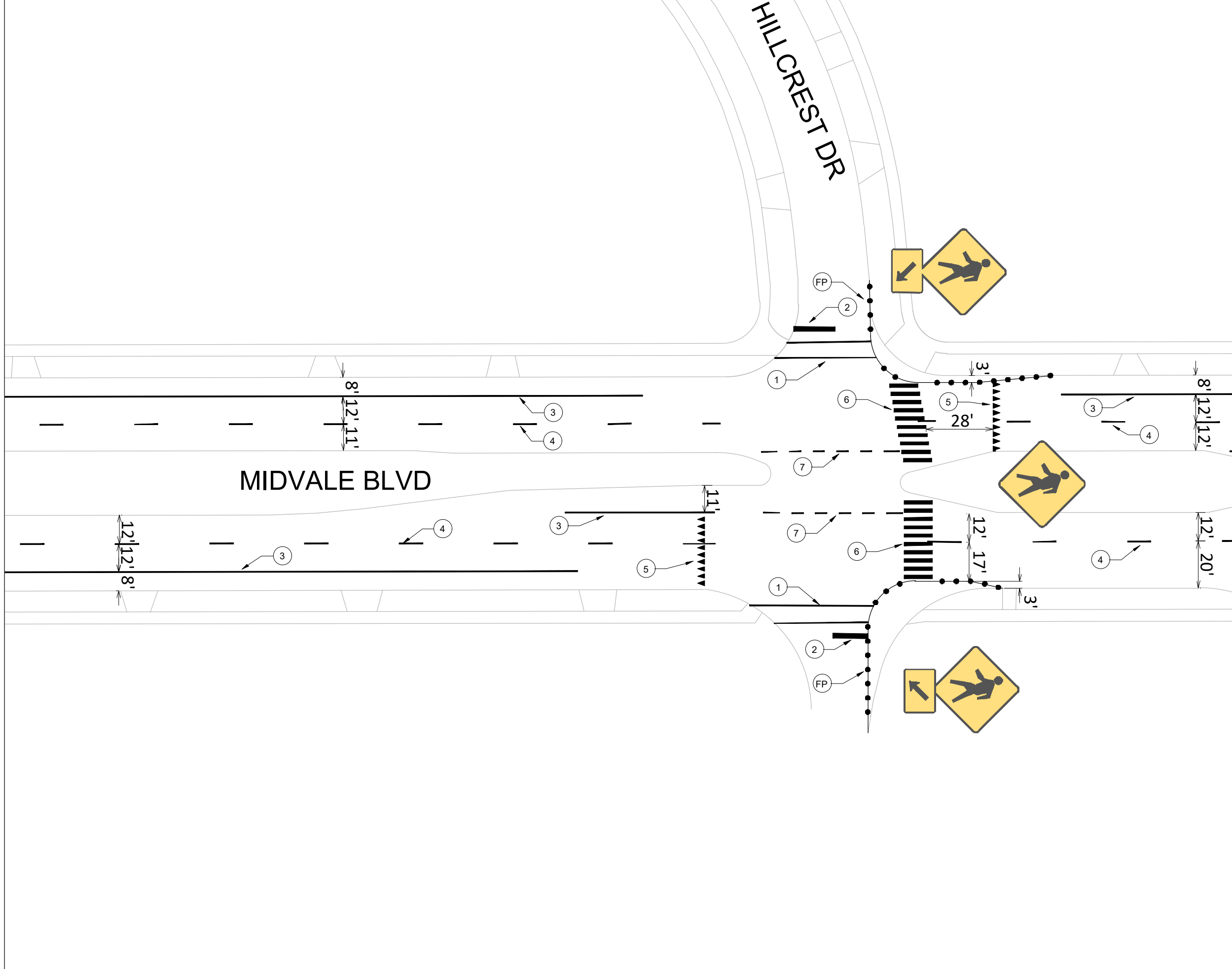


15516  
 PM-3

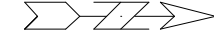
15516  
 MADISON, WI  
 8810  
 CONTRACT NO:

15516  
 2/23/2026 10:00 AM  
 Scale: 1"=40'  
 PM-3

MATCH LINE 2



MATCH LINE 3



15516  
PM-4

PAVEMENT MARKING PLAN - MIDVALE BOULEVARD  
**MIDVALE BOULEVARD PAVEMENT PATCHING**  
 M:\DESIGN\Projects\15516\CAD\Traffic\15516TE-PavementMarking - Full Resurfacing.dwg

15516  
 MADISON, WI  
 8810  
 CONTRACT NO:

MARK	REVISION	DATE	BY
15516	15516	2/23/2028 10:01 AM	PM-4

Designated By: NJL  
 Date: 2/23/2028 10:01 AM  
 Scale: 1" = 40'

MATCH LINE 3

MATCH LINE 4

106 S Midvale Blvd

102 S Midvale Blvd

66 S Midvale Blvd

62 S Midvale Blvd

58 S Midvale Blvd

54 S Midvale Blvd

50 S Midvale Blvd

46 S Midvale Blvd

BAGLEY PKWY

4348 Bagley Pkwy

4344 Bagley Pkwy

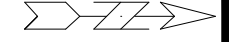
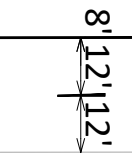
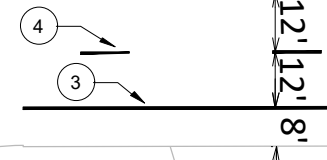
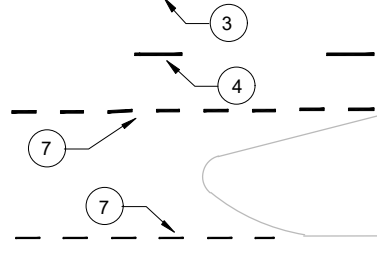
57 S Midvale Blvd

53 S Midvale Blvd

49 S Midvale Blvd

45 S Midvale Blvd

MIDVALE BLVD



MARK	REVISION	DATE	BY

PAVEMENT MARKING PLAN - MIDVALE BOULEVARD  
**MIDVALE BOULEVARD PAVEMENT PATCHING**  
 M:\DESIGN\Projects\15516\CAD\Traffic\15516TE-PavementMarking - Full Resurfacing.dwg



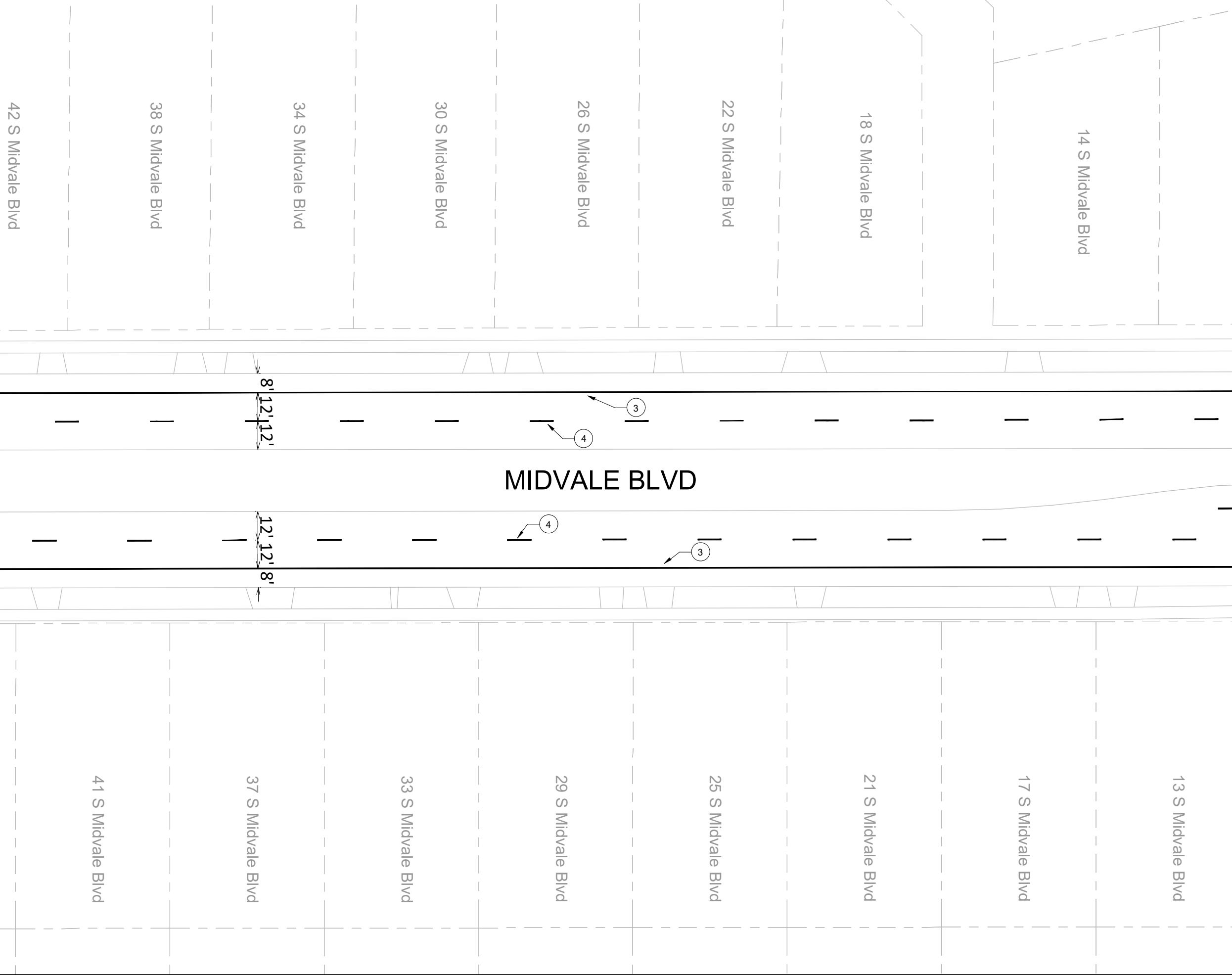
15516  
 PM-5

15516  
 MADISON, WI

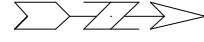
CONTRACT NO:  
 8810

15516  
 PM-5

MATCH LINE 4



MATCH LINE 5



15516  
PM-6

PAVEMENT MARKING PLAN - MIDVALE BOULEVARD

MIDVALE BOULEVARD PAVEMENT PATCHING

M:\DESIGN\Projects\15516\CAD\Traffic\15516TE-PavementMarking - Full Resurfacing.dwg

15516

MADISON, WI

8810

CONTRACT NO:

MARK	REVISION	DATE	BY

Designated By: NLI Date: 2/23/2026 10:04 AM Scale: 1" = 40'  
15516 PM-6

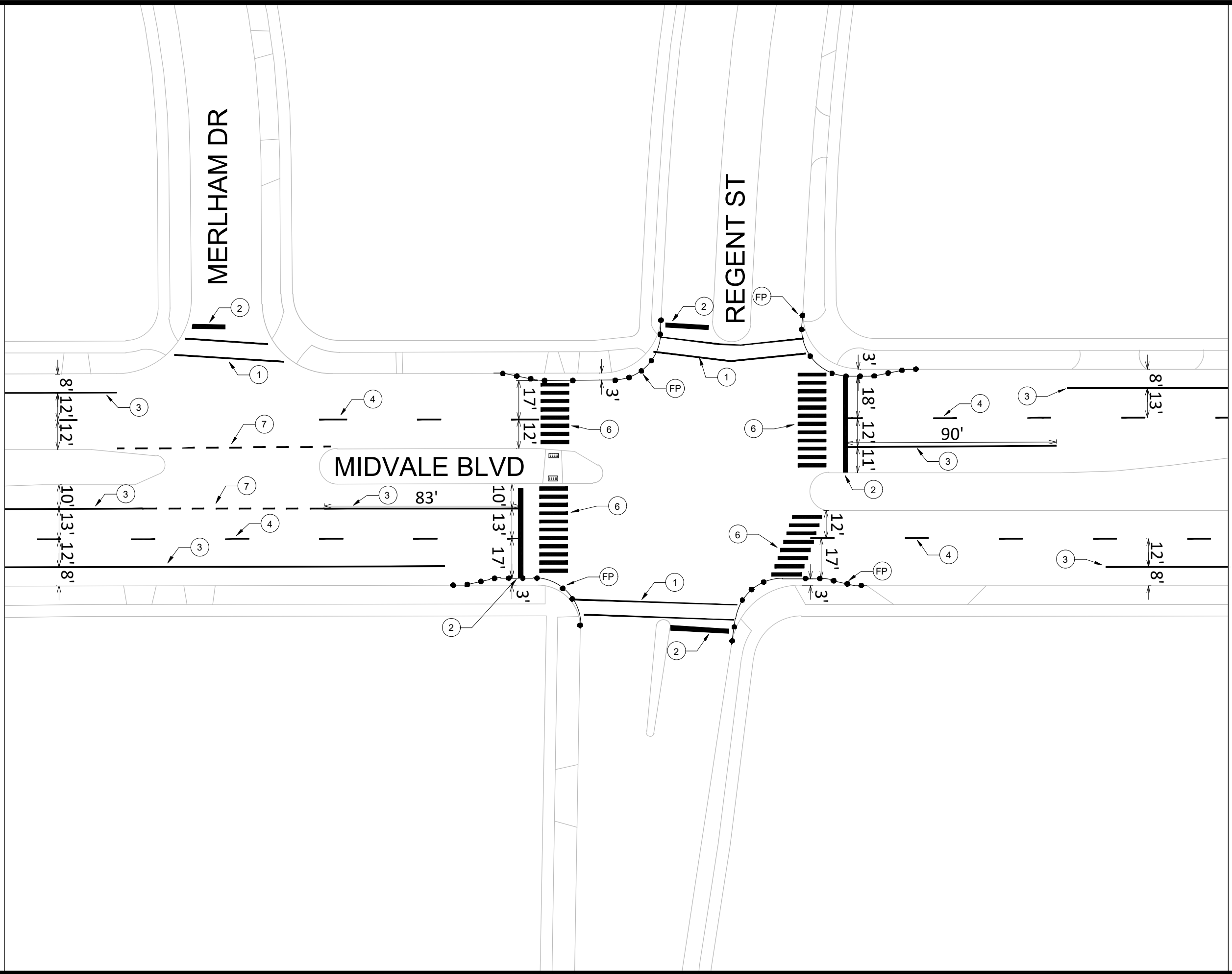
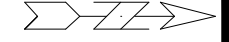
MATCH LINE 5

MATCH LINE 6

MERLHAM DR

REGENT ST

MIDVALE BLVD



15516  
PM-7

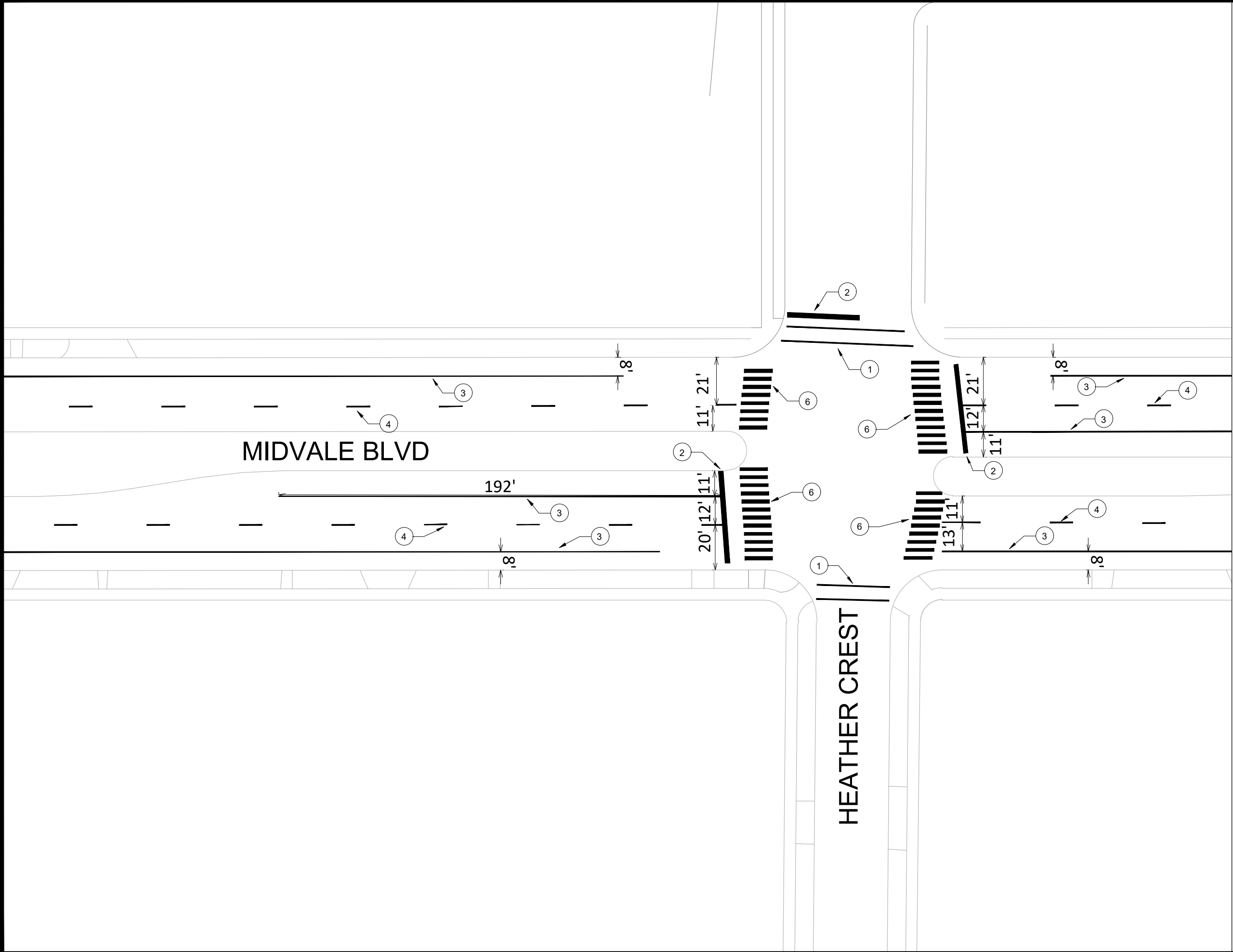
PAVEMENT MARKING PLAN - MIDVALE BOULEVARD  
**MIDVALE BOULEVARD PAVEMENT PATCHING**  
M:\DESIGN\Projects\15516\CAD\Traffic\15516TE-PavementMarking - Full Resurfacing.dwg

15516  
MADISON, WI  
8810

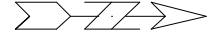
CONTRACT NO:

MARK	REVISION	DATE	BY
15516 <td>2/23/2026 <td>10:05 AM <td>PM-7 </td></td></td>	2/23/2026 <td>10:05 AM <td>PM-7 </td></td>	10:05 AM <td>PM-7 </td>	PM-7





MATCH LINE 8



15516  
PM-9

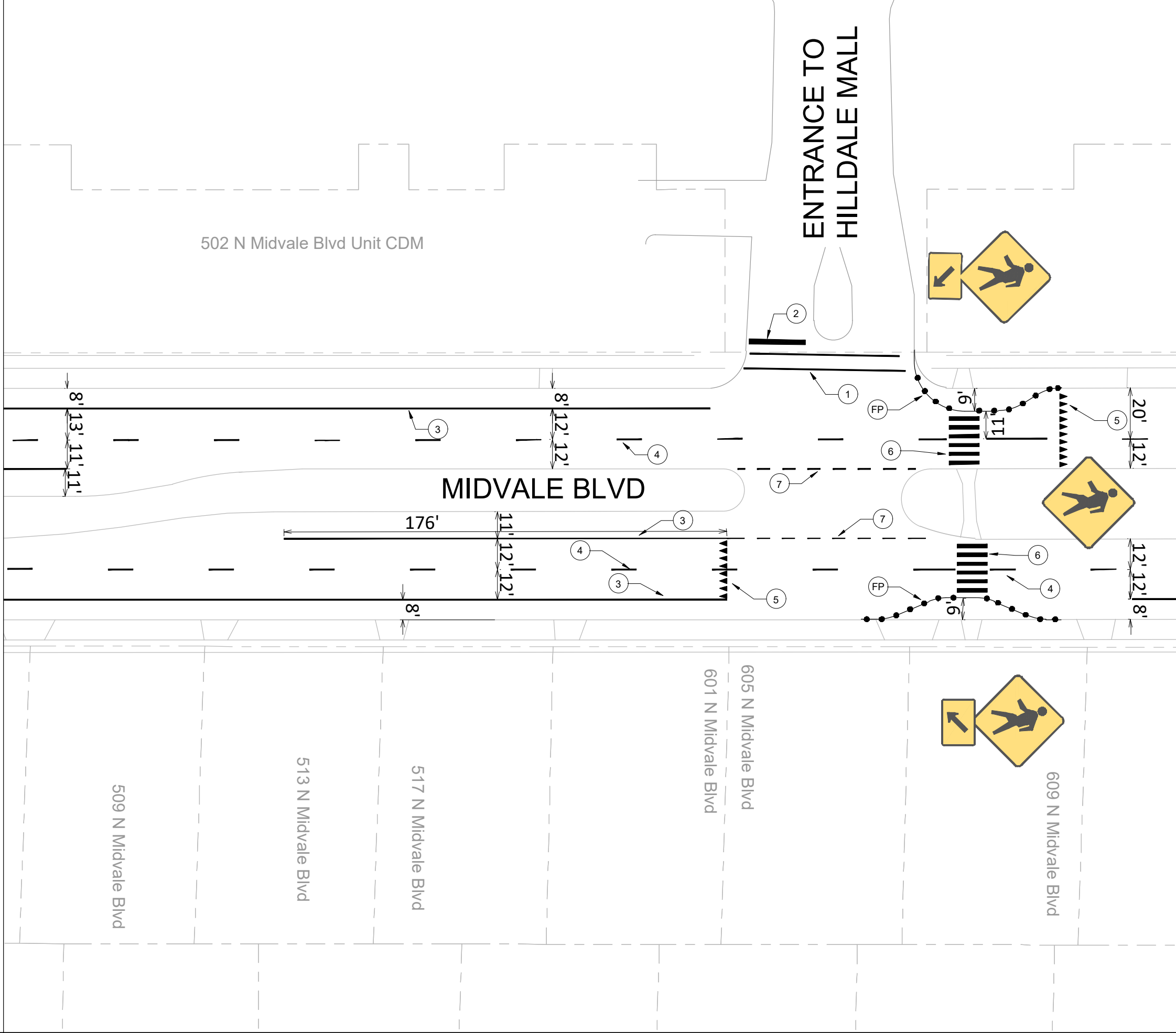
PAVEMENT MARKING PLAN - MIDVALE BOULEVARD  
**MIDVALE BOULEVARD PAVEMENT PATCHING**  
 M:\DESIGN\Projects\15516\CAD\Traffic\15516TE-PavementMarking - Full Resurfacing.dwg

15516  
MADISON, WI  
8810  
CONTRACT NO:

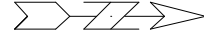
MARK	REVISION	DATE	BY
15516	1	2/23/2026	10:07 AM
15516	2		
15516	3		
15516	4		
15516	5		
15516	6		
15516	7		
15516	8		
15516	9		
15516	10		
15516	11		
15516	12		
15516	13		
15516	14		
15516	15		
15516	16		
15516	17		
15516	18		
15516	19		
15516	20		
15516	21		
15516	22		
15516	23		
15516	24		
15516	25		
15516	26		
15516	27		
15516	28		
15516	29		
15516	30		
15516	31		
15516	32		
15516	33		
15516	34		
15516	35		
15516	36		
15516	37		
15516	38		
15516	39		
15516	40		
15516	41		
15516	42		
15516	43		
15516	44		
15516	45		
15516	46		
15516	47		
15516	48		
15516	49		
15516	50		
15516	51		
15516	52		
15516	53		
15516	54		
15516	55		
15516	56		
15516	57		
15516	58		
15516	59		
15516	60		
15516	61		
15516	62		
15516	63		
15516	64		
15516	65		
15516	66		
15516	67		
15516	68		
15516	69		
15516	70		
15516	71		
15516	72		
15516	73		
15516	74		
15516	75		
15516	76		
15516	77		
15516	78		
15516	79		
15516	80		
15516	81		
15516	82		
15516	83		
15516	84		
15516	85		
15516	86		
15516	87		
15516	88		
15516	89		
15516	90		
15516	91		
15516	92		
15516	93		
15516	94		
15516	95		
15516	96		
15516	97		
15516	98		
15516	99		
15516	100		

Designated By: NJL  
 Date: 2/23/2026 10:07 AM  
 Scale: 1" = 40'  
 PM-9

MATCH LINE 8



MATCH LINE 9



MARK	REVISION	DATE	BY

15516  
MADISON, WI

8810  
CONTRACT NO:

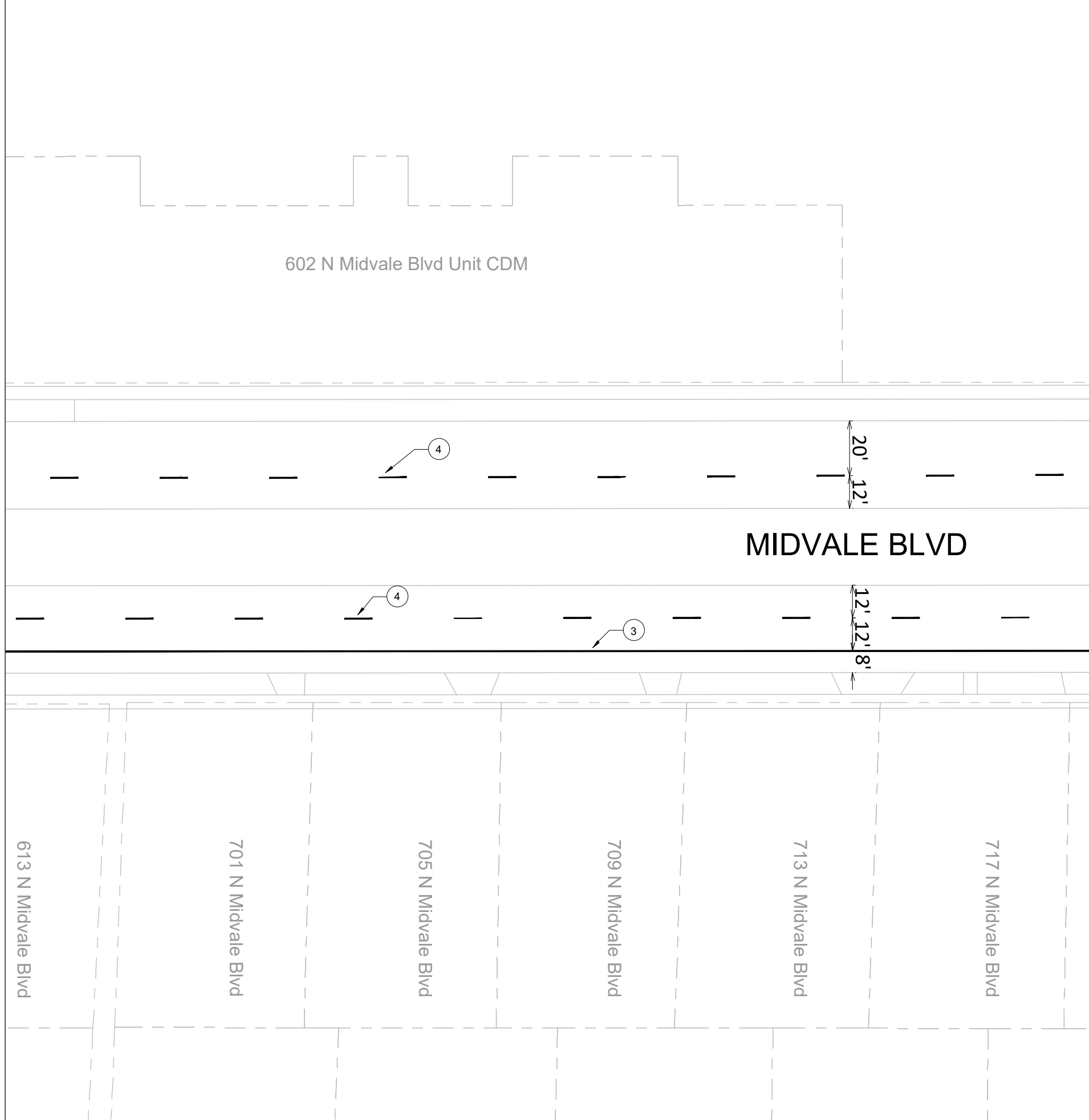
PAVEMENT MARKING PLAN - MIDVALE BOULEVARD  
**MIDVALE BOULEVARD PAVEMENT PATCHING**  
 M:\DESIGN\Projects\15516\CAD\Traffic\15516TE-PavementMarking - Full Resurfacing.dwg



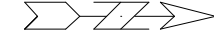
15516  
PM-10

Designated By: NLI  
15516  
Date: 2/23/2026 10:08 AM  
Scale: 1"=40'  
PM-10

MATCH LINE 9



MATCH LINE 10



15516  
PM-11

PAVEMENT MARKING PLAN - MIDVALE BOULEVARD  
**MIDVALE BOULEVARD PAVEMENT PATCHING**  
 M:\DESIGN\Projects\15516\CAD\Traffic\15516TE-PavementMarking - Full Resurfacing.dwg

15516  
 MADISON, WI  
 8810  
 CONTRACT NO:

MARK	REVISION	DATE	BY
15516	15516	2/23/2026 10:09 AM	PM-11
15516	15516		
15516	15516		
15516	15516		

Designated By: NJJ Date: 2/23/2026 10:09 AM Scale: 1" = 40'

